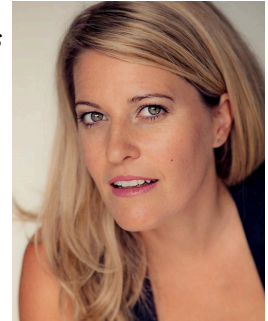


Repped by [UTA](#) - [Tanisha Whiting](#)
SAG-AFTRA [Accredited \(US\) IC](#)
BECTU (UK) [IC Registry Level 2 IC](#)
Certified with [Safe Sets](#)

" Those scenes took a while to shoot. Maybe a week each. Of course, there was an intimacy coordinator present all the time. She was fantastic because she allowed the creative art and the directors, the actors and cinematographer to explore what we needed to explore, but she was always present for any, any, any concern, I think everybody felt very good and very protected; she was involved in the process in a very close way and I'm very grateful about that."

-Alfonso Cuarón, Disclaimer* [The Hollywood Reporter](#)



Selected Credits 2021-25

ROSEBUSH PRUNING	2nd Intimacy Coordinator	The Match Factory, Mubi, Sur Films Dir: Karim Aïnouz
THE MAP THAT LEADS TO YOU	Intimacy Coordinator	Temple Films, Nostromo Pictures, Amazon Studios Dir: Lasse Hallström
THE GRAY HOUSE	Intimacy Coordinator	Castel Films Dir: Roland Joffé Ep 3
RETURN TO SILENT HILL (2024)	Intimacy Coordinator	Wallace Lotus Ltd. Dir: Christophe Gans
KILLER HEAT	Intimacy Coordinator	Makeready (US), Amazon Studios Dir: Phillipe LaCôte
THE SERIAL KILLER'S WIFE	Intimacy Coordinator	Clapperboard Studios, Blackbox Media Dir: Laura Way Eps 1-6
DISCLAIMER	Intimacy Coordinator	Apple TV+, Esperanto Filmoj, Anonymous Content Dir: Alfonso Cuarón Eps. 1-7
THE END WE START FROM	Intimacy Coordinator	SunnyMarch, Hera Pictures, BBC Film Dir: Mahalia Belo
THE GOLD (S1)	Intimacy Coordinator	BBC, Tannadice, Secuoya Studios Dir: Aneil Karia Ep. 4
THE DIPLOMAT (S1)	Intimacy Coordinator	World Pictures, Fresco Film Dir: Jill Robertson Eps. 1, 3, & 6
FAIR PLAY	Intimacy Coordinator	MRC/T-Street Films Dir: Chloe Domont
CITADEL (S1)	Intimacy Coordinator	Amalgamated Films/Amazon Studios Dir: Jessica Yu Ep. 5
THE MOTHER	Intimacy Coordinator	Sur Films/Nuyorican/Netflix Dir: Niki Caro
HELLRAISER (2022)	Intimacy Coordinator	HULU/Spyglass Dir: David Bruckner

[email: samanthamurrayonset@gmail.com](mailto:samanthamurrayonset@gmail.com)

Repped by [UTA](#) - Tanisha Whiting
SAG-AFTRA [Accredited \(US\) IC](#)
BECTU (UK) [IC Registry Level 2 IC](#)
Certified with [Safe Sets](#)

"She has an incredible manner with Directors, Actors and the entire crew. Her knowledge of the industry and sensitivity of her training is incomparable. Confident in her approach but with the greatest respect to the process she was crucial for our production. There were many moments that Sam was integral to our actors' ability to feel comfortable and give fantastic performances. In addition to this she also navigated crews needs and supported SA's through very risky situations. I have produced movies with intimacy coordinators in the past and I can safely say that Sam is my only choice for the future".

Leopold Hughes, Producer T-Street Films, FAIR PLAY (Netflix)

Thank you so much for your input on "The Gray House." The Civil War historical narrative of our film chose to tackle issues of slavery and violence against women, and the production greatly benefited from your participation. You were instrumental in providing an analysis of key points in the script, setting constructive and realistic guidelines for the workplace, and seeing that all of the cast and crew were sensitive to and comfortable with filming scenes of an intimate nature. The director and producers expressed their gratitude for your contribution to the production process. This was our second time working together, and I will very much look forward to the next one. Hoping you will now enjoy some much-deserved down-time. Please be in touch.

All the best,

Christopher Landry, Co-Producer, 1st AD *The Gray House*

[Leila George on Golden Globe-nominated series 'Disclaimer': I felt on fire playing Catherine' - Filming Alfonso Cuarón's Apple TV+ series felt like shooting a "very well-funded indie movie."](#) George said. George went on to stress that she felt the set of Disclaimer was a particularly comfortable space to film those more intimate scenes, with everyone having "the utmost care and respect," and working with intimacy coordinator Samantha Murray.

| yahoo!news | 4 January 2025 | by Elisabetta Bianchini

[Leila George on the Magical, Cinderella-esque Dream of Making Disclaimer](#) *For her more intimate scenes in the show, of which there are quite a few, George and co-star Louis Partridge (Enola Holmes) worked with intimacy coordinator Samantha Murray to get the scenes just right. George likens working with Murray to choreographing a dance or a fight scene.* | Who What Wear | 20 September 2024 | by Jessica Baker

[Fair Play director: 'Phoebe Dynevor, Alden Ehrenreich had instant chemistry'](#) *Given the steamy nature of some of the scenes, Domont also spoke about the importance of having an intimacy coordinator [Samantha Murray] on set – and hit back at some figures in the industry who have questioned the need for this role in the past.* | RadioTimes.com | 6 October 2023

['Fair Play' Doesn't Play Fair](#) *The film also uses sex scenes quite well. As the culture yet again convulses over whether sex scenes are necessary, Fair Play joins the ranks of In the Cut (2003) and The Last Seduction (1994) as films that rely on sex — its physicality, its intimacy and thrill and danger (coordinated by Samantha Murray)* | The News Lens | 3 January 2024
by CJ Sheu