



**SION CLARKE**

**SUPERVISING  
ART DIRECTOR**

**Mob: 07803 124 842 / Email: [sionclarke@me.com](mailto:sionclarke@me.com)**

Sion is an experienced Supervising Art Director with over 20 years of experience working on TV & Film projects. He is confident leading all aspects of the Art Department workload, working with department HODs, Directors and Producers through prep and shoot. His blend of skills and experience has seen him work on a wide range of projects, from period dramas to reimagining sci-fi worlds. Sion's structured, calm approach has seen him lead Art Departments on both small and large-scale productions and his organisational and budgeting skills are a solid foundation for the whole department to succeed.

## Selected Credits

### **THE DIPLOMAT / Netflix UK**

December 2021 – November 2022

#### **Supervising Art Director – 8 Episodes HETV - Band 3**

Production Designer: Chris Roope , Producer: Dan Toland, Line Producer :  
Katie Player

Multiple Large Studio Builds & Locations, Budget Holder - Materials & Labour  
Budget £5m+

### **TAILSPIN (Suspicion) / Keshet UK & Apple TV**

December 2019 – March 2021.

#### **Supervising Art Director – 8 Episodes HETV - Band 3**

Production Designer: Lisa-Marie Hall

Multiple Large Studio Builds, 200+ Sets on Locations, Two Main Units Running  
Parallel, Covid Restart, Large Art Dept, Budget Holder - Materials & Labour  
Budget £6m+

### **SITTING IN LIMBO / Leftbank Pictures & BBC**

September 2019 – December 2019

#### **Supervising Art Director - TV Drama**

Production Designer: Stephen Campbell

True account of a British Citizen during the Windrush immigration scandal.

### **ALEX RIDER S1 / Amazon & Eleventh-Hour Films**

January 2019 – July 2019

#### **Supervising Art Director - 4 Episodes HETV**

Production Designer: Lisa-Marie Hall

A teen spy action adventure filmed in London and Romania, featuring large  
action sequences and SFX/VFX elements.

### **MISBEHAVIOUR / Leftbank Pictures & Pathe'**

September 2018 – January 2019

#### **Supervising Art Director – Feature Film**

Production Designer: Cristina Casali

Awards: BIFFA 2020 Nominated

A feature film following the build-up to the 1970s Miss World competition that  
was disrupted by activists, with a focus on their personal stories.

### **NOUGHTS & CROSSES / Mammoth TV & BBC**

June 2018 – September 2018

#### **Supervising Art Director - Tv Drama**

Production Designer: Lisa-Marie Hall

Pre-production and prep for an alternative reality drama shot in Cape Town,  
South Africa.

### **RED JOAN / Trademark Films**

September 2019 – December 2019

#### **Supervising Art Director – Feature Film**

Production Designer: Cristina Casali

A period feature film set predominantly in 1945-1949 and 2000. Main budget  
holder of £1m, responsible for location and studio builds, Art Department  
crewing and action vehicles

**ELECTRIC DREAMS / Leftbank Pictures, Amazon & Channel 4**

January 2017 – August 2017

**Supervising Art Director 5 x HETV Episodes**

Production Designer: Lisa-Marie Hall

Large Art Department covering five unique episodes based on the short stories of Philip K Dick, shot back-to-back on location and Studio Builds. Main budget holder of £4.3m, responsible for Art Department Crewing / Scheduling and CDM construction.

**CROOKED HOUSE / Fred Films**

September 2016 – December 2016

**Supervising Art Director – Feature Film**

Production Designer: Simon Bowles

Awards: BDFG (Nominated)

Film adaptation of Agatha Christie's most twisted tale. Main Budget holder, responsible for location and studio builds, Art Department crewing, SFX. Action Cars.

**SS-GB / Sid Gentle Productions & BBC**

July 2015 – February 2016

**Supervising Art Director – 5 x Episodes**

Production Designer: Lisa-Marie Hall

Period drama based on Len Deighton's alternate history novel. Set in London in 1943, in a United Kingdom conquered and occupied by Germany during WWII. Featured 110 sets, location & studio builds, SFX/VFX and action vehicles. Responsible for the crew and budget of £1.3m for a large Art Department.

**Memberships / Training**

British Film Designers Guild

BECTU

1st Option - Safe Management of Productions

1st Option - Safe Design and Construction of Production Sets

1st Option - Emergency First Aid at Work

**LONDON SPY / Working Title & BBC**

January 2015 – February 2015 (Second Block)

**Supervising Art Director – TV Drama**

Production Designer: Lisa-Marie Hall

Responsible for studio builds and locations for this contemporary spy drama

**HOME FIRES / ITV Studios**

July 2014 – December 2014

**Art Director - TV Drama**

Production Designer: Dominic Hyman

Six-episode period drama, Budget holder, responsible for location builds and SFX

**CILLA / ITV Studios**

January 2014 – May 2014

**Art Director - TV Drama**

Production Designer: Lisa-Marie Hall

Awards: RTS – Production Design (Nominated)

1960s period drama charting the rise of singer Cilla Black over the course of three episodes. Recreated Abbey Road Studios, the legendary "Cavern" Club and other Liverpool locations. Main budget holder, responsible for location and studio builds, and Art Department crewing.

**Previous Art Dept Roles**

Production Buyer

Standby Art Director

Graphics Designer

Props Dresser

Art Dept Assist

**Key Skills**

SketchUp Pro & Layout

Technical Drawing (AUTOCAD)

Adobe Photoshop / Illustrator

Scale Model Making

Good Excel Knowledge & Budget Reporting

3D Printing & CNC preparation

**Full Portfolio & References**

**Available on Request**

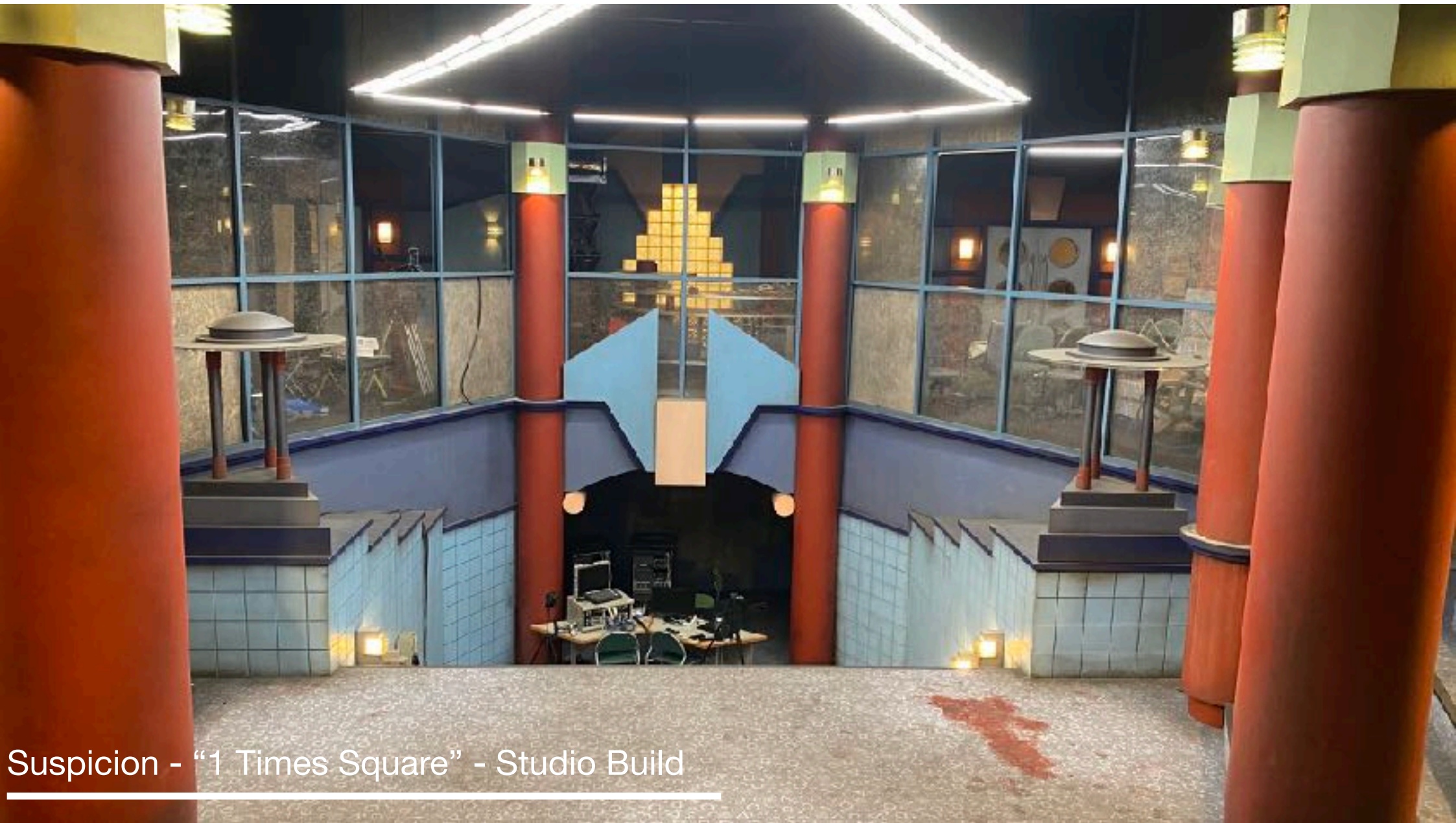


Electric Dreams - "Dreamweaver Spaceship" - Studio Build



Cilla - "Cavern Club" - Studio Build

---



Suspicion - "1 Times Square" - Studio Build

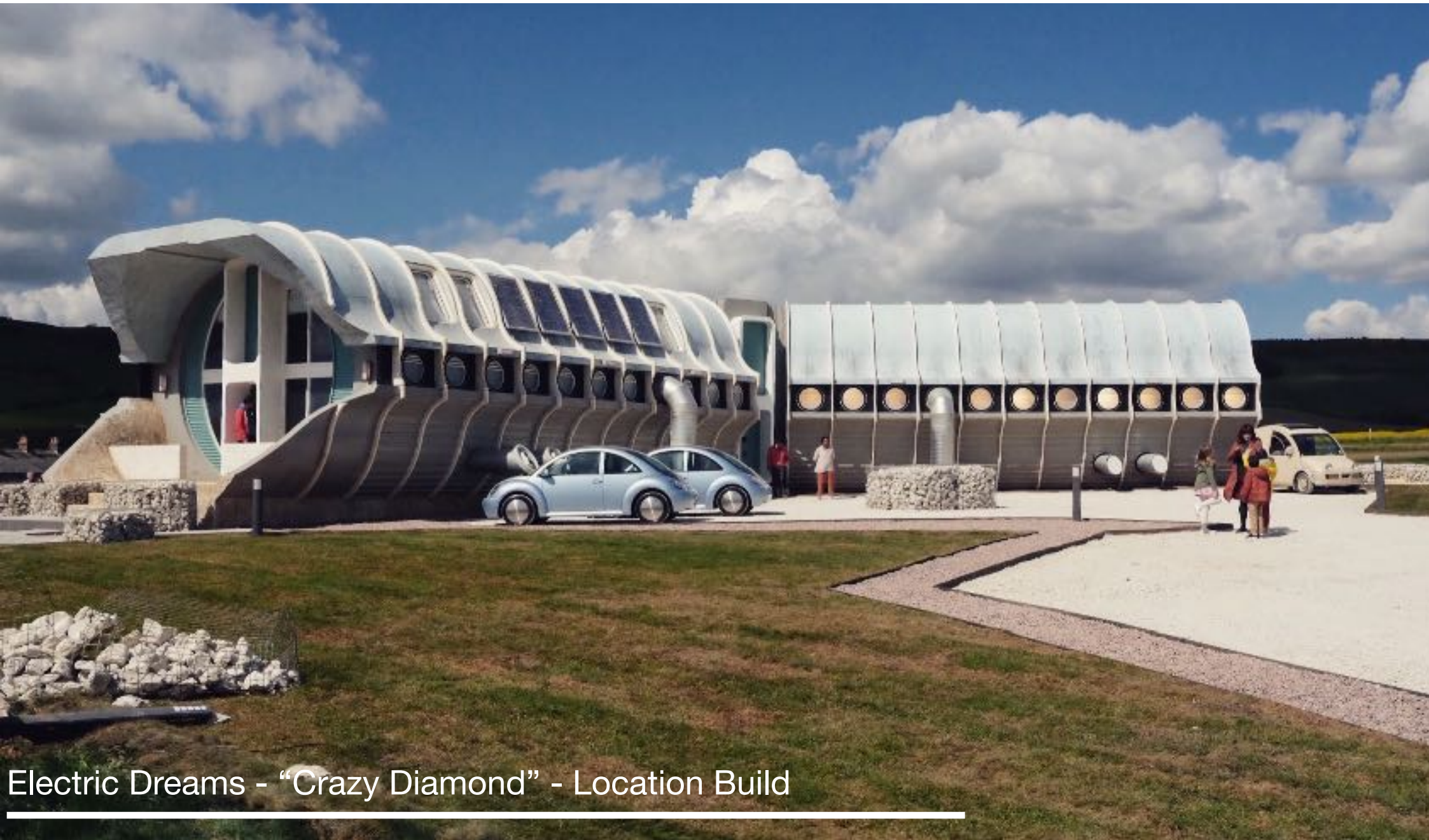
---



Suspicion - "Penthouse" - Studio Build



Suspicion - "Penthouse" - Studio Build



Electric Dreams - "Crazy Diamond" - Location Build